



# HOME-COMPOSTABLE PACKAGING

MAKING THE  
ENVIRONMENT  
A KEY STAKEHOLDER  
IN THE COMPANY





## About Us



We are a collective group of forward-thinkers dedicated to reshaping the landscape of the food packaging industry. Our company stands at the forefront, pioneering the integration of 100% natural and home-compostable products into the market. Our vision is to elevate these sustainable alternatives to the popularity and prevalence enjoyed by paper and bagasse products today.

At the heart of our enterprise is a robust network of business relationships, enabling us to deliver innovative solutions directly from their source. The foundation of our company rests on novel and functional answers to industry challenges. We take pride in meeting customer needs while unwaveringly prioritizing the creation of genuinely sustainable solutions.

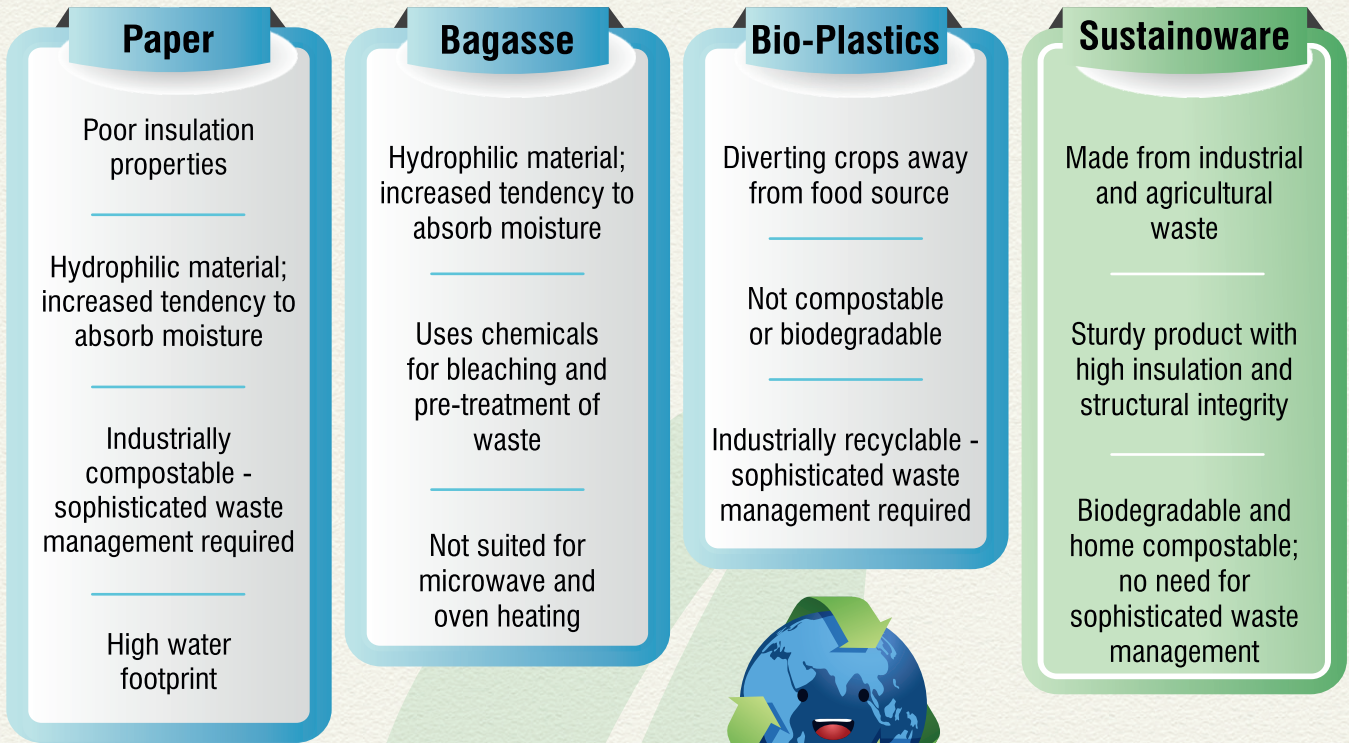
Central to our product line is our cassava starch offering—a versatile, customizable solution suitable for various industries. We seek partners committed to a waste-free future, those who also believe in authentic sustainability beyond mere greenwashing. True sustainability, in our view, encompasses the entire life cycle of a product, from cradle to grave. The Sustainaware range, crafted from bio-waste is home-compostable, meaning it can be disposed of in your garden, making it a truly circular offering.

Join us in shaping a future where sustainability is not just a goal but a tangible reality.

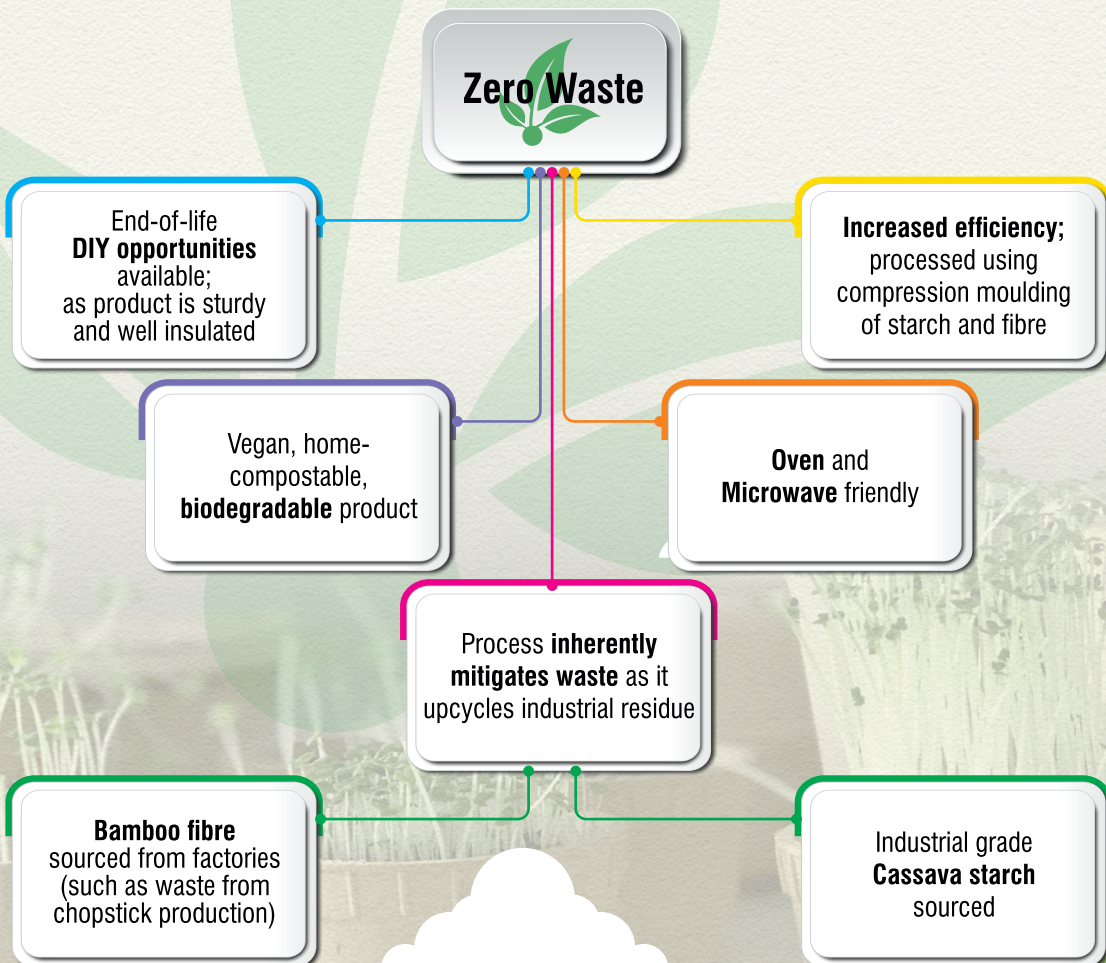




# Market Analysis

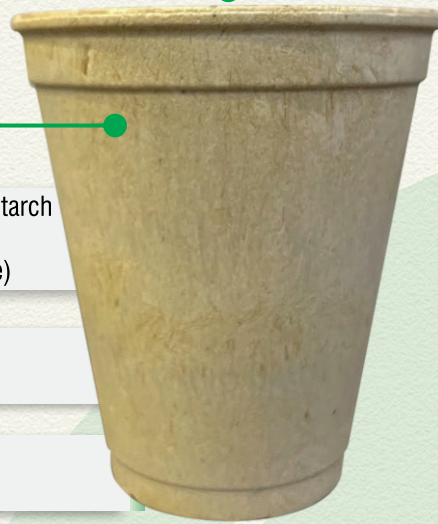


# Product Features





# Material Specification



## Material

### Base Material

Industrial Grade Cassava Starch  
Recycled Bamboo Fiber  
(FSC Certification Available)

### Coating

Bio-Based Solution  
(home compostable)

### Color

White or Natural Brown

### Shape

Customizable

## Product Specification

Insulation Impact	Up to 30°C
Liquid Barrier	48 hours
Home Compostability	14 days
Microwave	800W for 5 minutes
Oven*	250°C for 30 minutes
Coating Composition	100% Organic

\*Product colour may alter slightly under high temperatures

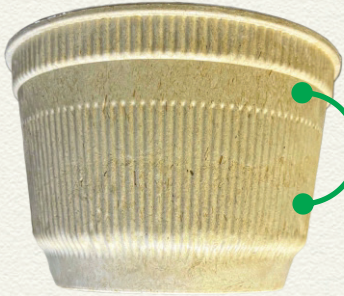


# Ideal for Food Packaging, Gift Packing and Refill's





# Product List



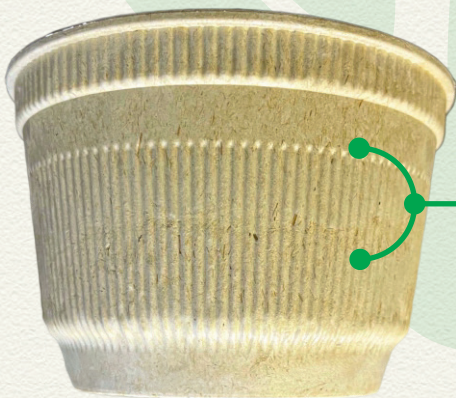
<b>Item Code</b>	: <b>B500</b>
<b>Description</b>	: <b>500 ml Round Container</b>
<b>Pcs / Carton</b>	: 500
<b>Carton / Pallet</b>	: 9
<b>Qty / Container (20 ft)</b>	: 112,500
<b>Qty / Container (40 ft)</b>	: 275,000
<b>Dimension</b>	: Diameter x Height (mm): 120 x 70

**Note** : Prices available on request



<b>Item Code</b>	: <b>B750</b>
<b>Description</b>	: <b>750 ml Round Container</b>
<b>Pcs / Carton</b>	: 250
<b>Carton / Pallet</b>	: 8
<b>Qty / Container (20 ft)</b>	: 75,000
<b>Qty / Container (40 ft)</b>	: 187,500
<b>Dimension</b>	: Diameter x Height (mm): 145 x 70

**Note** : Prices available on request



<b>Item Code</b>	: <b>B1000</b>
<b>Description</b>	: <b>1000 ml Round Container</b>
<b>Pcs / Carton</b>	: 250
<b>Carton / Pallet</b>	: 8
<b>Qty / Container (20 ft)</b>	: 68,750
<b>Qty / Container (40 ft)</b>	: 162,500
<b>Dimension</b>	: Diameter x Height (mm): 145 x 95

**Note** : Prices available on request



# Product List



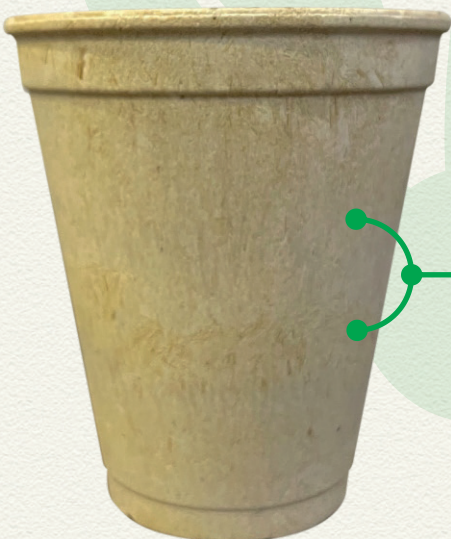
<b>Item Code</b>	: <b>C180</b>
<b>Description</b>	: <b>180 ml Cup</b>
<b>Pcs / Carton</b>	: 1000
<b>Carton / Pallet</b>	: 15
<b>Qty / Container (20 ft)</b>	: 275,000
<b>Qty / Container (40 ft)</b>	: 650,000
<b>Dimension</b>	: Diameter x Height (mm): 80 x 85

**Note** : Prices available on request



<b>Item Code</b>	: <b>C250</b>
<b>Description</b>	: <b>250 ml Cup</b>
<b>Pcs / Carton</b>	: 500
<b>Carton / Pallet</b>	: 25
<b>Qty / Container (20 ft)</b>	: 212,500
<b>Qty / Container (40 ft)</b>	: 500,000
<b>Dimension</b>	: Diameter x Height (mm): 88 x 92

**Note** : Prices available on request



<b>Item Code</b>	: <b>C350</b>
<b>Description</b>	: <b>350 ml Cup</b>
<b>Pcs / Carton</b>	: 500
<b>Carton / Pallet</b>	: 20
<b>Qty / Container (20 ft)</b>	: 200,000
<b>Qty / Container (40 ft)</b>	: 462,000
<b>Dimension</b>	: Diameter x Height (mm): 88 x 127

**Note** : Prices available on request



# Customisability



## Customizable Shapes

- Customised moulds available upon request at additional cost.
- Multiple coating and colour options available.
- Customised shapes require 1 container minimum order.

## Your Brand Your Logo

We are able to print your unique brand on our products





71 - 75, Shelton Street, Covent Garden, London,  
WC2H 9JQ, England

200/3 moo 4, Khaerai Subdistrict, Krathum baen  
District Samut Sakhon Province 74110. Thailand

351, Vadala-Hariyala Road, Vadala,  
Dist. Kheda - 387 550. (Gujarat) India.

Website: [sustainaware.com](http://sustainaware.com)  
Email: [erica@sustainaware.com](mailto:erica@sustainaware.com), [pahul@sustainaware.com](mailto:pahul@sustainaware.com)